

Rocker Switch RB Series



SPECIFICATION

- Electrical Rating : 6A 250VAC/10A 125VAC(UL)
- Mechanical life: Over 30000 cycles
- Electrical life: Over 10000 cycles
- Contact resistance: <math><20\text{m}\Omega</math>
- Insulation resistance: >1000M Ω
- High voltage resistance: >1500V 1 min.
- Ambient temperature: Terminal side -20 to +85 $^{\circ}\text{C}$
Actuating side -20 to +55 $^{\circ}\text{C}$
- Storage temperature: -30 to +80 $^{\circ}\text{C}$ Max
- Atmospheric humidity: Max.85%
- Actuating force: 4 to 8N(depends on different switch function)
- Flammability: 94V-2
- Temperature rise at the terminal: Max 30 $^{\circ}\text{C}$ (UL1054)
- Solder ability of terminal: Max 350 $^{\circ}\text{C}$, 3s

MATERIALS

- Housing: PA66
- Rocker: PC
- Contacts: Silver Alloy
- Terminal: Copper silver plated
- Spring: SWC
- Movable arm: Copper silver plated

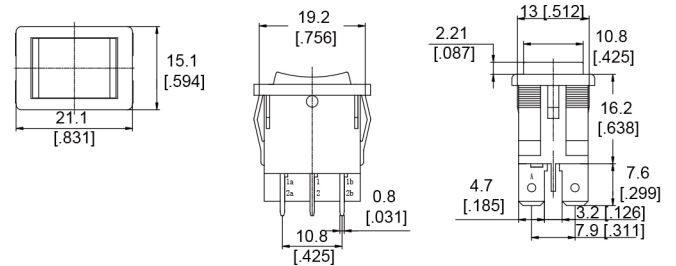
HOW TO ORDER

RB3	2	K	K	E	T	O	C																												
Series	Rating	Housing color	Actuator color	Marking	Terminal	Lamp	Safety approval																												
<table border="1"> <tr><td>3</td><td>ON-OFF-ON</td></tr> <tr><td>6</td><td>(ON)-OFF-(ON)</td></tr> <tr><td>8</td><td>(ON)-OFF-ON</td></tr> </table>	3	ON-OFF-ON	6	(ON)-OFF-(ON)	8	(ON)-OFF-ON	6A 250VAC 10A 125VAC	<table border="1"> <tr><td>K</td><td>Black</td></tr> <tr><td>W</td><td>White</td></tr> <tr><td>G</td><td>Gray</td></tr> </table>	K	Black	W	White	G	Gray	<table border="1"> <tr><td>G</td><td>Gray</td></tr> <tr><td>W</td><td>White</td></tr> <tr><td>K</td><td>Black</td></tr> <tr><td>O</td><td>Orange</td></tr> <tr><td>R</td><td>Red</td></tr> <tr><td>B</td><td>Blue</td></tr> </table>	G	Gray	W	White	K	Black	O	Orange	R	Red	B	Blue	See option of marking	Quick connect tab	No lamp	<table border="1"> <tr><td>C</td><td>UL</td></tr> <tr><td>E</td><td>None Approvals</td></tr> </table>	C	UL	E	None Approvals
3	ON-OFF-ON																																		
6	(ON)-OFF-(ON)																																		
8	(ON)-OFF-ON																																		
K	Black																																		
W	White																																		
G	Gray																																		
G	Gray																																		
W	White																																		
K	Black																																		
O	Orange																																		
R	Red																																		
B	Blue																																		
C	UL																																		
E	None Approvals																																		

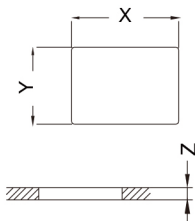
Option of switch function

Item NO	POLES & THROWS	Rocker position ():Momentary		
		Left	Center	Right
RB3	DPDT	ON	OFF	ON
RB6	DPDT	(ON)	OFF	(ON)
RB8	DPDT	(ON)	OFF	ON

Dimension



Panel cut out



Z	Y	X
0.70~1.25	12.80~12.90	19.20~19.30
1.25~2.00	12.80~12.90	19.30~19.40
2.00~3.00	12.80~12.90	19.50~19.60